

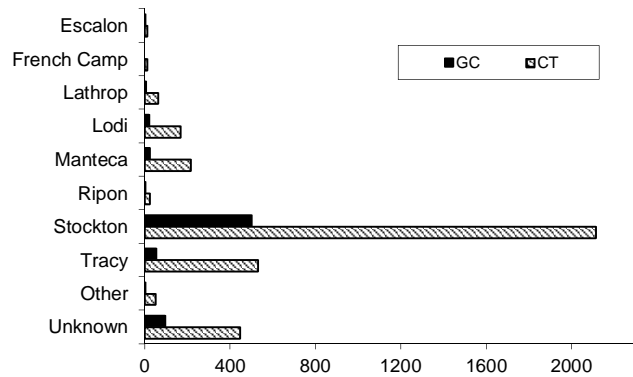
# 2010 San Joaquin County Annual STD Report

**Table 1: STD Cases, SJC, 2009 & 2010**

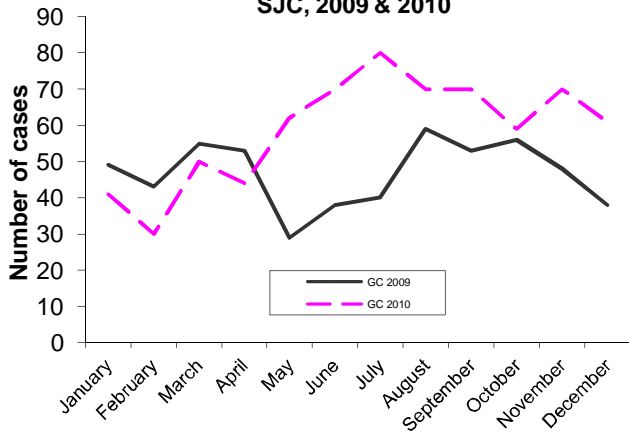
	2009	2010
Gonorrhea	561	707
Chlamydia	3481	3624
Syphilis (all stages)	65	73
1 & 2	25	33
Early latent	8	10
Unk. Latent	8	9
Late latent	24	16
Congenital	0	5
Neuro*	0	1

\* Neurosyphilis is a sequela of syphilis and is not a stage of syphilis

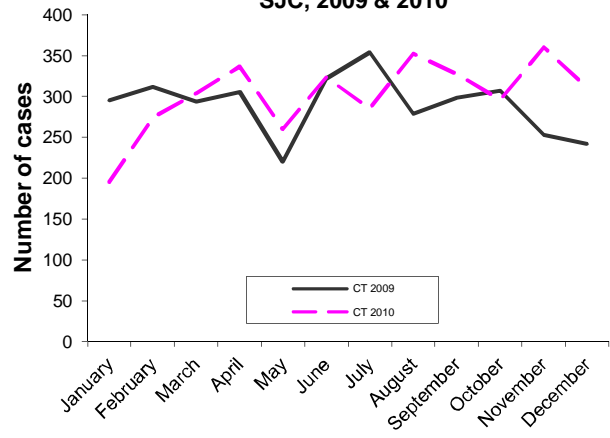
**Figure 1. Gonorrhea & Chlamydia Cases by City of Residence, SJC, 2010**



**Figure 2. Monthly Gonorrhea Trends, SJC, 2009 & 2010**



**Figure 3. Monthly Chlamydia Trends, SJC, 2009 & 2010**



**Table 2: Gonorrhea Cases by Age and Gender, SJC, 2010**

Age category	Female	Male	Total
0-4	0	0	0
5-9	0	0	0
10-14	6	3	9
15-19	135	66	201
20-24	118	90	208
25-29	54	84	138
30-34	28	32	60
35-39	12	28	40
40-44	9	13	22
45-54	6	9	15
55-64	1	5	6
65+	0	0	0
unknown	1	2	3
<b>TOTAL</b>	<b>370</b>	<b>332</b>	<b>702</b>

\*5 cases were of unknown gender

**Table 3: Chlamydia Cases by Age and Gender, SJC, 2010**

Age category	Female	Male	Total
0-4	0	0	0
5-9	0	0	0
10-14	21	10	31
15-19	920	255	1175
20-24	918	398	1316
25-29	336	274	610
30-34	129	90	219
35-39	77	53	130
40-44	24	19	43
45-54	19	20	39
55-64	4	7	11
65+	0	0	0
unknown	15	11	26
<b>TOTAL</b>	<b>2463</b>	<b>1137</b>	<b>3600</b>

\*24 cases were of unknown gender

Note: Morbidity is based on the date of report. Totals may change due to additions and/or deletions from the database.